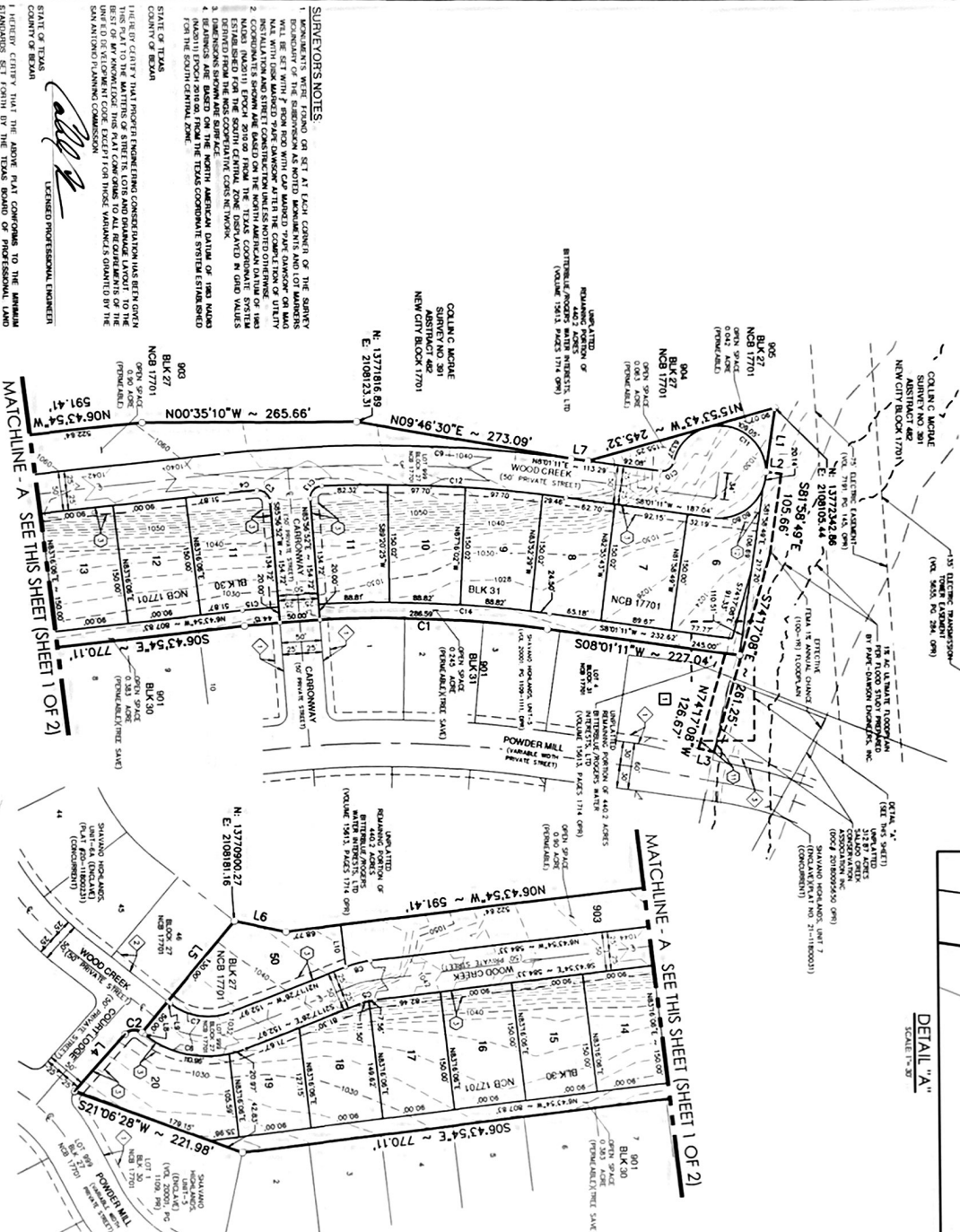
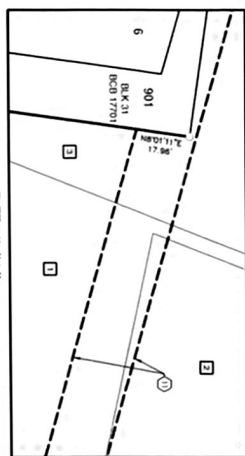


GPS SAWS COSMOS UTILITY
 ALL UTILITIES SHOWN ON THIS PLAN ARE BASED ON THE GPS SAWS COSMOS UTILITY DATA. THE DATA WAS COLLECTED ON 11/15/2022. THE DATA WAS PROVIDED BY SAWS WASTE WATER DEPARTMENT. THE DATA IS FOR INFORMATIONAL PURPOSES ONLY. THE ENGINEER HAS CONDUCTED VISUAL VERIFICATION OF THE DATA. THE ENGINEER HAS NOT CONDUCTED ANY FIELD SURVEYING TO VERIFY THE DATA. THE ENGINEER HAS NOT CONDUCTED ANY FIELD SURVEYING TO VERIFY THE DATA. THE ENGINEER HAS NOT CONDUCTED ANY FIELD SURVEYING TO VERIFY THE DATA.

SAWS WASTE WATER DEPARTMENT
 THE SAWS WASTE WATER DEPARTMENT HAS PROVIDED THE UTILITY DATA FOR THIS PROJECT. THE DATA IS FOR INFORMATIONAL PURPOSES ONLY. THE ENGINEER HAS CONDUCTED VISUAL VERIFICATION OF THE DATA. THE ENGINEER HAS NOT CONDUCTED ANY FIELD SURVEYING TO VERIFY THE DATA. THE ENGINEER HAS NOT CONDUCTED ANY FIELD SURVEYING TO VERIFY THE DATA.



SUBDIVISION NOTES
 1. THE PLAT IS SUBJECT TO THE CITY OF SAN ANTONIO'S ZONING ORDINANCES AND THE CITY OF SAN ANTONIO'S SUBDIVISION MAP ACT. THE PLAT IS SUBJECT TO THE CITY OF SAN ANTONIO'S ZONING ORDINANCES AND THE CITY OF SAN ANTONIO'S SUBDIVISION MAP ACT. THE PLAT IS SUBJECT TO THE CITY OF SAN ANTONIO'S ZONING ORDINANCES AND THE CITY OF SAN ANTONIO'S SUBDIVISION MAP ACT.

STATE OF TEXAS
 COUNTY OF BEXAR
 I HEREBY CERTIFY THAT THE ABOVE PLAT CONFORMS TO THE STATUTE AND STANDARDS SET FORTH BY THE TEXAS SUBDIVISION MAP ACT AND THE CITY OF SAN ANTONIO'S SUBDIVISION MAP ACT. I HAVE CONDUCTED A VISUAL VERIFICATION OF THE DATA AND HAVE FOUND IT TO BE ACCURATE. I HAVE CONDUCTED A VISUAL VERIFICATION OF THE DATA AND HAVE FOUND IT TO BE ACCURATE.

STATE OF TEXAS
 COUNTY OF BEXAR
 I HEREBY CERTIFY THAT THE ABOVE PLAT CONFORMS TO THE STATUTE AND STANDARDS SET FORTH BY THE TEXAS SUBDIVISION MAP ACT AND THE CITY OF SAN ANTONIO'S SUBDIVISION MAP ACT. I HAVE CONDUCTED A VISUAL VERIFICATION OF THE DATA AND HAVE FOUND IT TO BE ACCURATE. I HAVE CONDUCTED A VISUAL VERIFICATION OF THE DATA AND HAVE FOUND IT TO BE ACCURATE.

STATE OF TEXAS
 COUNTY OF BEXAR
 I HEREBY CERTIFY THAT THE ABOVE PLAT CONFORMS TO THE STATUTE AND STANDARDS SET FORTH BY THE TEXAS SUBDIVISION MAP ACT AND THE CITY OF SAN ANTONIO'S SUBDIVISION MAP ACT. I HAVE CONDUCTED A VISUAL VERIFICATION OF THE DATA AND HAVE FOUND IT TO BE ACCURATE. I HAVE CONDUCTED A VISUAL VERIFICATION OF THE DATA AND HAVE FOUND IT TO BE ACCURATE.

STATE OF TEXAS
 COUNTY OF BEXAR
 I HEREBY CERTIFY THAT THE ABOVE PLAT CONFORMS TO THE STATUTE AND STANDARDS SET FORTH BY THE TEXAS SUBDIVISION MAP ACT AND THE CITY OF SAN ANTONIO'S SUBDIVISION MAP ACT. I HAVE CONDUCTED A VISUAL VERIFICATION OF THE DATA AND HAVE FOUND IT TO BE ACCURATE. I HAVE CONDUCTED A VISUAL VERIFICATION OF THE DATA AND HAVE FOUND IT TO BE ACCURATE.

MARIA C. TREVINO
 NOTARY PUBLIC - STATE OF TEXAS
 My Comm. Exp. May 18, 2024

Maria C. Trevino
 Notary Public

STATE OF TEXAS
 COUNTY OF BEXAR
 I HEREBY CERTIFY THAT THE ABOVE PLAT CONFORMS TO THE STATUTE AND STANDARDS SET FORTH BY THE TEXAS SUBDIVISION MAP ACT AND THE CITY OF SAN ANTONIO'S SUBDIVISION MAP ACT. I HAVE CONDUCTED A VISUAL VERIFICATION OF THE DATA AND HAVE FOUND IT TO BE ACCURATE. I HAVE CONDUCTED A VISUAL VERIFICATION OF THE DATA AND HAVE FOUND IT TO BE ACCURATE.

PAPER-DAWSON ENGINEERS
 2000 W. LOOP WEST, SUITE 100
 SAN ANTONIO, TEXAS 78201
 DATE OF PREPARATION: NOVEMBER 21, 2022

[Signature]
 PROJECT ENGINEER

PLAT NO. 21-11800239
SUBDIVISION PLAT OF
SHAVANO HIGHLANDS UNIT 6B
(ENCLAVE)

SCALE: 1" = 100'

SEE SHEET 2 OF 2 FOR PLAT NOTES
 PLAT NOTES APPLY TO EVERY PAGE
 OF THIS MULTIPAGE PLAT

